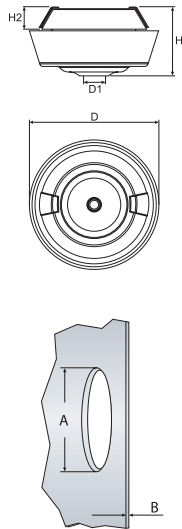


NEW!



Click Fit Snap-In Protection Grommets



PART NUMBER	Colour	Size	Cable Diameter Range		Panel Dimensions			Component Dimensions				Unit Quantity
			To achieve IP67 & Anchorage Type A*	To achieve IP65	(A) Hole Dia.	(B) Thk.	(B) Thk. for IP65/67	H	H2	D1	D***	
33488107	Grey (RAL 7035)	M20	7.0 to 11.0	4.0 to 11.0	20.5	0.7 to 3.0	0.7 to 3.0	17 to 20	5.5	4.0	34.2 to 37.2	500
33488108	Black (RAL 9005)	M20	7.0 to 11.0	4.0 to 11.0	20.5	0.7 to 3.0	0.7 to 3.0	17 to 20	5.5	4.0	34.2 to 37.2	500
33488109	White (RAL 9010)	M20	7.0 to 11.0	4.0 to 11.0	20.5	0.7 to 3.0	0.7 to 3.0	17 to 20	5.5	4.0	34.2 to 37.2	500
33488101	Grey (RAL 7035)	M20	7.0 to 11.0	4.0 to 11.0	20.5	1.5 to 5.0	2.0 to 5.0	17 to 20	5.5	4.0	29.3 to 34.5	100
33488102	Black (RAL 9005)	M20	7.0 to 11.0	4.0 to 11.0	20.5	1.5 to 5.0	2.0 to 5.0	17 to 20	5.5	4.0	29.3 to 34.5	100
33488103	White (RAL 9010)	M20	7.0 to 11.0	4.0 to 11.0	20.5	1.5 to 5.0	2.0 to 5.0	17 to 20	5.5	4.0	29.3 to 34.5	100
33488110	Grey (RAL 7035)	M25	7.0 to 13.0**	4.0 to 13.0	25.5	0.7 to 3.0	0.7 to 3.0	17 to 20	5.7	5.0	39.2 to 42.2	500
33488111	Black (RAL 9005)	M25	7.0 to 13.0**	4.0 to 13.0	25.5	0.7 to 3.0	0.7 to 3.0	17 to 20	5.7	5.0	39.2 to 42.2	500
33488112	White (RAL 9010)	M25	7.0 to 13.0**	4.0 to 13.0	25.5	0.7 to 3.0	0.7 to 3.0	17 to 20	5.7	5.0	39.2 to 42.2	500
33488104	Grey (RAL 7035)	M25	7.0 to 13.0**	4.0 to 13.0	25.5	1.5 to 5.0	2.0 to 5.0	17 to 20	5.7	5.0	34.3 to 40.0	100
33488105	Black (RAL 9005)	M25	7.0 to 13.0**	4.0 to 13.0	25.5	1.5 to 5.0	2.0 to 5.0	17 to 20	5.7	5.0	34.3 to 40.0	100
33488106	White (RAL 9010)	M25	7.0 to 13.0**	4.0 to 13.0	25.5	1.5 to 5.0	2.0 to 5.0	17 to 20	5.7	5.0	34.3 to 40.0	100

Material: TPE and Nylon 6,6 (Halogen Free)
Material service temperature: -20°C to +125°C

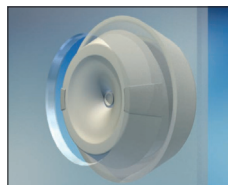
Test Standards:
EN60529: 1191 +A1
EN50262: 1998
EMKO-TUI (03-SEC) F1001/84

Semko Report: 606620

RoHS Directive 2002/95/EC compliant **RoHS** ✓

* Cable Anchorage Type A, according to EN 50262.
** 8,1 - 8,9 mm only approved for tension relief.
*** Varies depending on the thickness of material installed in.

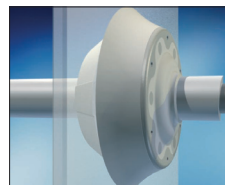
- Seals cable in unthreaded holes
- Protects against ingress of dust and water up to IP67
- Quick and easy installation without tools
- Suitable as blind plug for fitting of additional equipment later
- Integral cable anchorage provides strain relief for cable



Center the grommet in the opening (from the inside), push evenly with both thumbs until it clicks into place.



Insert the cable from the side with the polyamide tabs.



Product features

Height of only 17-20 mm, 5,7 mm on the outside irrespective of size. Cable glands are approx. 30-40 mm.

Rubber coated tension relief for protection of the cable mantle

Installation time saving of up to 90%

Ergonomic installation

Fixed in both directions when mounted

IP67 / IP65

Integrated tension relief

Handles large range of cable and pipe diameters.

"Pushout" membrane

Self-adjusting to wall thickness 2 - 5 mm.

Space saving design

No material compression during installation

